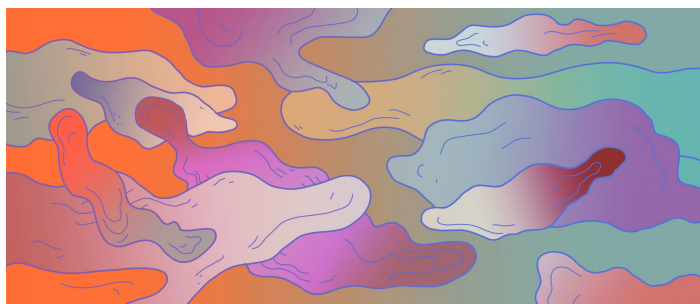


DOUBLE CHOCOLATE PEANUT BUTTER SMORES STOUT



The trend continues at Lervig, we are proud of our stouts and we have used our skills to make such a luxurious yummy peanut butter S'mores pastry stout that is actually well balanced and not overly sweet or too much of anything, however it has a lot of everything... its been heavily dosed with cocoa nibs to give the beer a rich dark chocolate flavor, then we added the peanuts vanilla and marshmallows to create one of the most satisfying stouts we have made at Lervig. Its tasting a lot like a Reese's pieces peanut butter cup.

Ingredients	WATER, MALT , OATS , COCOA, PEANUT ,HOPS, VANILLA SUGAR, LACTOSE , YEAST, MARSHMALLOWS.
ABV	11% IBU 40 OG 25,1P
Packaging	33 CL CANS 20 L KEY KEG
Best before	36 months
Appearance	DARK BLACK TANNED HEAD
Aroma	CHOCHOLATE, PEANUT BUTTER, VANILLA



Flavour

CHOCOLATE PEANUT BUTTER CAKE

Body

LUXURIOUS

Double Chocolate Peanut Butter Smores Stout